

# GOD'S GREAT FAMILY

Music and Words by Jon Althoff and Bob Kauflin

♩ = 96

D **VERSE**

Bm



5

D

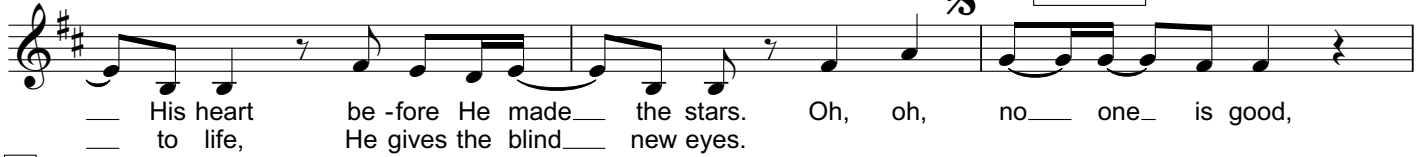


8

Bm

A G **CHORUS**

D



11

A

Bm

G

D

A

Bm



14

G

D

A

Bm

Em



17

G

A

D



20

**BRIDGE**

Bm

G



23

A

Bm

1. G

D



25

2. G

A

Bm

A

**D.S.**

